

2225 W HEFNER RD, OKLAHOMA CITY, OK 73120

## OFFICE SPACE AVAILABLE FOR LEASE



### LEASE SUMMARY

**Available SF:** 2,190 - 3,398 SF

**Lease Rate:** \$18.00 SF/YR

**Lease Type** Full Service

**Lot Size:** 2.7 Acres

**Building Size:** 10,777 SF

**Submarket:** Northwest

### PROPERTY HIGHLIGHTS

- 1.5 miles to Lake Hefner Parkway
- 2.0 miles to Memorial Rd / John Kilpatrick Turnpike
- Video surveillance
- Each space has it's own private entrance
- Each space has it's own set of restrooms
- Signage opportunities available
- Spaces come furnished and will be "move-in" ready

For more information please contact:

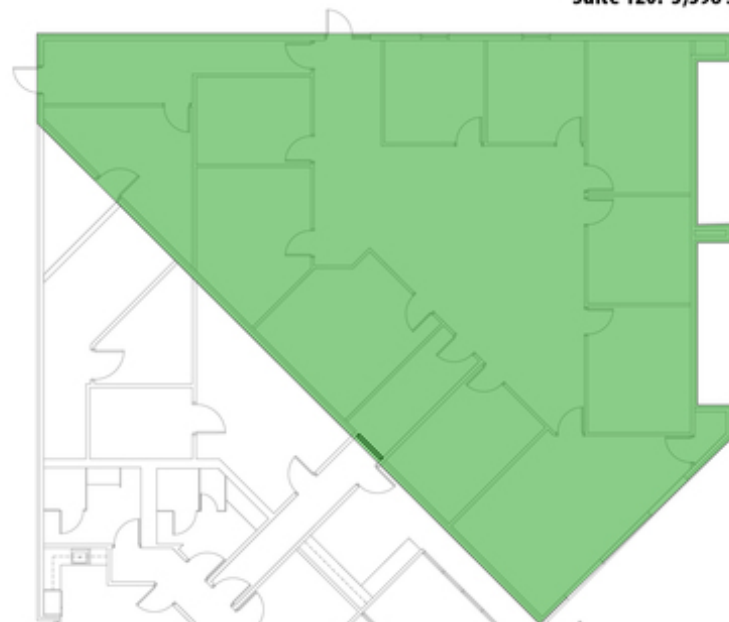
**TRE DUPUY**

tdupuy@priceedwards.com

405.843.7474

## FLOOR PLANS

Suite 120: 3,398 SF



Suite 110: 2,190 SF



For more information please contact:

**TRE DUPUY**

[tdupuy@pricedwards.com](mailto:tdupuy@pricedwards.com)

405.843.7474